

# Eoslift

## VALUE SCALE E20



### Cost-effective & High Efficiency

- ◆ Industrial standard with entry-level cost
- ◆ Enhances productivity and simplifies logistic processes
- ◆ Saves time and space

### Durability

- ◆ Shock and vibration resistant
- ◆ Water tight for outdoor use
- ◆ A metal cover behind the indicator to protect it from shocks
- ◆ Compact ,dedicated indicator saves space ,economic for transportation

### Stable

- ◆ The frame uses heavy duty steel construction for maximum strength and durability
- ◆ Durable powder coat finish

### Superb Accuracy

- ◆ Digital filtering is used to compensate for vibration and improve the scale accuracy
- ◆ Load cells are protected from pallets
- ◆ High accuracy :maximum error 0.05%



### Low Power Consumption

- ◆ Powered by 2\*900mAh button cell
- ◆ Battery life 300 operation hours

### Convenience

- ◆ Easy-to-read backlit LCD displays
- ◆ The indicator has four buttons for easy use
- ◆ Overload protection

## Functions

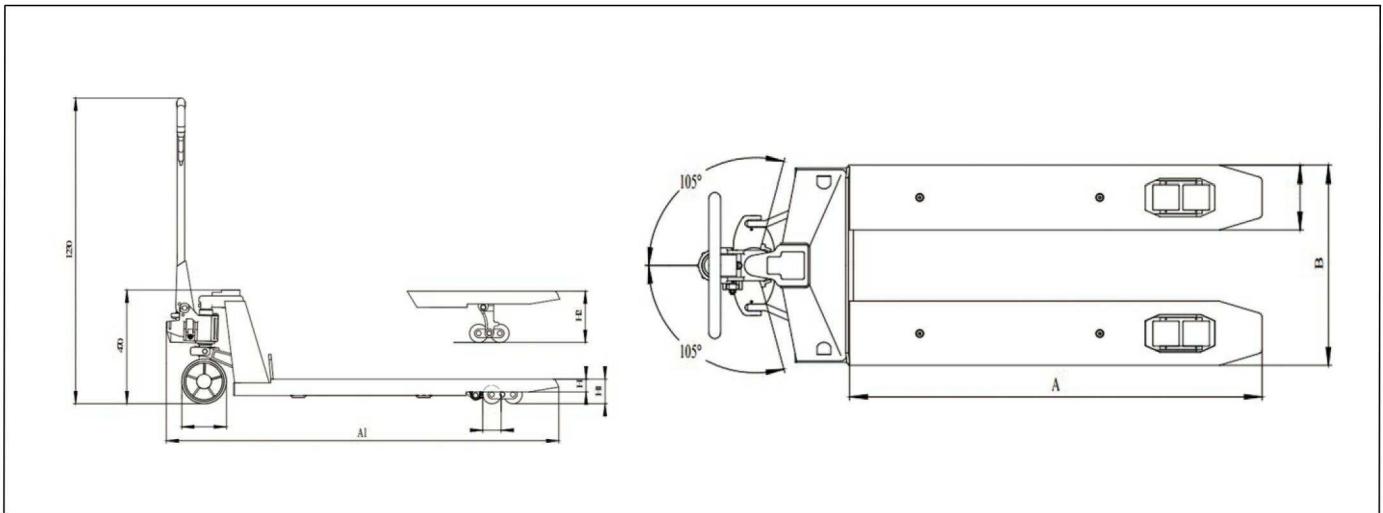
- ◆ Manual zero correction
- ◆ Gross /net weighing
- ◆ Manual tare
- ◆ Error message in display
- ◆ Automatic shut off after 5 minutes of non-use or manual adjust
- ◆ Lbs/kg toggle function
- ◆ Backlight indicator for read out
- ◆ Factory calibration and user calibration

## Specifications

- ◆ Capacity 2000kg
- ◆ Graduation 1kg
- ◆ Max.inaccuracy 0.05%
- ◆ Display LCD ,digital height 15mm
- ◆ Keypad 3 function keys , on/off key
- ◆ Backlit LED
- ◆ Protection class load cells IP67, indicator IP54
- ◆ Power supply 2\*900mAh button cell
- ◆ Battery life 300 operation hours

## Dimensions

Model	E20				
Min.Fork Height H1	mm	75	85	75	85
Max.Fork Height H2	mm	190	200	190	200
Fork Length A	mm	1220	1220	1150	1150
Fork Width B	mm	685	685	560	560



# Eoslift

## Eoslift USA Corp.

5585 Brooks Street, Montclair, CA 91763

Toll Free Tel : +1 888-264-5008

Fax: +1-781-780-5915

E-mail: sales@eosliftusa.com

Website: www.eosliftusa.com

